



CMPS

Center for Modern Psychoanalytic Studies

Extension Division · Psychoanalysis and the Arts



Harold Pinter's

A Kind of Alaska

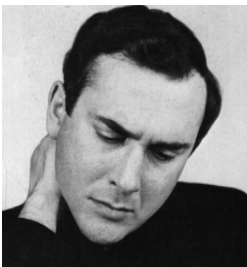
Sam Schacht directs Harold Pinter's play, *A Kind of Alaska* on the CMPS stage. First performed on a London stage in 1982, Pinter acknowledged his source as Oliver Sacks' (1973) compelling non-fiction book, which chronicles a series of case-reports on patients struck down by *Encephalitis Lethargica* in the early decades of the twentieth century and re-activated in the late sixties by the drug L-DOPA. One of them, Deborah a middle aged woman, has awakened from a 30-year sleep resulting from *encephalitis lethargica* with a mind still that of a sixteen year old. Her sleeping sickness is seen as a metaphor for life and death and the subjectivity of human experience.

Friday, November 6th, 2015 7:30-9:30 PM

CMPS. 16 West 10th Street . New York, NY 10011

■ For information or to RSVP: 212.260.7050 • www.cmeps.edu • cmeps@cmeps.edu ■

This production is free of charge and is open to clinicians and the public. The play is followed by a social gathering and an opportunity to speak with the director and cast members of the production



HAROLD PINTER 1930-2008

Nobel Prize-winning English playwright, screenwriter, director, and actor "whose gifts for finding the ominous in the everyday and the noise within silence made him the most influential and imitated dramatist of his generation." —*New York Times*

DIRECTOR: **Sam Schacht, MA, LP** Sam Schacht is a CMPS graduate and former Dean of the Actors Studio Drama School, New School University. He is a producer, actor and instructor at the Stella Adler Studio of Acting. Sam Schacht has directed and edited theatrical events at CMPS for 10 years.

ACTORS in this production include: ■ **Lisa Carrington** ■ **Patricia Lavin** ■ **Kenneth Kimmins.**