



# 2010 Winter/Spring Events

## Semester Course

### Introduction to Modern Psychoanalysis

This popular course introduces the fundamentals of modern psychoanalytic theory and technique to those considering psychoanalytic training. Topics include transference, resistance, countertransference, and emotional communication. **Open to clinicians and the public.**

**THURSDAYS: 5:30 – 7:30PM:** 8-week course. March 4, 11, 18, 25; April 15, 22, 29; May 6. \$250. CMPS Faculty

## Scientific Presentations

*Presentations are followed by discussion and a social gathering. There is no charge for these events. RSVP is requested.*

### REALITY TV GROUP PSYCHOTHERAPY

This is the first Reality TV Group Psychotherapy to air throughout NYC. Dr. Goldberg will screen different segments on two evenings at CMPS. Modern psychoanalytic group techniques can be studied, *in vivo*, as conflicts arise in the group process and the group leader applies interventions. Freud's concept of *eros* (love) and *thanatos* (death and aggression) are evident as group members struggle to find safe, yet authentic footing with one another.

**TWO FRIDAYS: MARCH 12, 7:30–9:30 PM · APRIL 23, 7:30–9:30PM**

Jane Goldberg, PhD, LP, Faculty, CMPS; Owner of La Casa Day Spa; Author of numerous articles & books including "Psychotherapeutic Treatment of Cancer Patients."

### AGGRESSION IN DREAMS: INTERSECTING THEORIES

This paper explores the concept of aggression in dreams, as understood by Freud, Spontitz and Meadow and the consciousness researcher, Antti Revonsuo and emphasizes the remarkable similarities between divergent theoretical disciplines. The unique contributions of each theoretician with regard to the significance of the manifest dream content is scrutinized.

**FRIDAY, MAY 7, 7:30–9:30PM**

Barbara D'Amato, PsyD, LP, Faculty, CMPS and NYGSP.

### HYMAN SPOTNITZ AND THE ART OF PSYCHOANALYTIC INTERVENTIONS

Hyman Spontitz vastly expanded the repertoire of verbal psychoanalytic interventions to which he brought unprecedented creativity and imagination. This presentation centers its attention on this aspect of his work

**FRIDAY MAY 21, 7:30–9:30PM**

Sara Sheftel, PhD, LP, Faculty, CMPS, NYGSP and BGSP.



## Sunday Film & Brunch

*This popular film series is held Sundays at Noon. A light brunch is followed by the screening of feature-length films an in-depth discussion.*

Suggested contribution for Brunch: \$10.

**APRIL 11: "MY LIFE AS A DOG"** This 1985 critically-acclaimed film from director Lasse Hallstrom, is a sensitive, tragic, and funny story of 12-year-old Ingemar (Anton Glanzius) whose life is far too complex for a boy his age. It is an offbeat but realistic coming-of-age story with rich characters and unforgettable scenes. • Charlotte Melnik, MPA, LP, Faculty CMPS & NYGSP.

**APRIL 25: "A SINGLE MAN: A SECRET LIFE"** Based on Christopher Isherwood's 1964 groundbreaking novel, "A Single Man," directed by Tom Ford and starring Colin Firth, tells the story of an English professor caught in a secret world of his own making. With exquisite art direction and cinematography, the film is a character study in loss, libido, the death drive, and a life in the closet. • Richard Sacks, MA, LP, Faculty, CMPS & NYGSP.

**MAY 2: "CAPTURING THE FRIEDMANS"** The viewer is a silent participant as the Friedmans disintegrate beneath allegations of pedophilia and pornography. Confronted by personal and societal prejudices, we are forced to decide whether we are participants in communal hysteria or upholders of morality. As the extremes dissolve, one must redefine characters' motivations and culpability. • Ioanis Papavassiliu, MA, LMHC. PsyD Candidate, Boston Graduate School of Psychoanalysis, CMPS Fellow.

**MAY 16: "IN TREATMENT"** HBO's popular, controversial show depicts the work and life of fictional therapist, Paul Weston. Using segments from the show, Dr. Kalin compares Weston's clinical approach with that of modern psychoanalysis. • Eugene Kalin, PhD, LP Faculty, CMPS & NYGSP.

## Open Seminars for Clinicians

### Breakfast Seminar FRIDAY FEBRUARY 26, 9:30–11AM

#### Modern Psychoanalytic Approaches to Harm Reduction

Harm reduction strategies reduce the negative consequences of drug use and improve quality of life. Clinicians meet clients "where they're at" to learn their emotional defenses and strengths. Learn the principles of harm reduction and their relationship to modern psychoanalytic techniques. Bring cases to discuss. **Complimentary Breakfast.** 1.5 CEUs. **RSVP: 212.260.7050.** Raúl Plasencia, LCSW; Director of Bailey Holt House; modern psychoanalyst in private practice.

Laurie Mitchell, PhD; Director, Marcus Garvey Nursing Home, modern psychoanalyst in private practice.

### Lunch Seminar FRIDAY APRIL 30, 1:00–2:30PM

#### Social Workers and the Couch: IS PSYCHOANALYTIC TRAINING FOR YOU?

JOIN US FOR LUNCH AND AN EXPLORATION of the ways that modern psychoanalytic training can expand and strengthen your clinical insights and supervisory skills. We will discuss questions about psychoanalytic training, what challenges are involved, and how you might come to a better understanding about whether this may be a path you want to follow.

**A Complimentary Lunch is provided. RSVP: 212.260.7050**

Mimi Crowell, PhD, LP, President of the Center for Modern Psychoanalytic Studies and Program Director of the New York Graduate School of Psychoanalysis is joined by Sybil Schacht, LCSW, Hunter College School of Social Work and Jennifer Lieber, LCSW, New York University School of Social Work, both members of the modern psychoanalytic community.

### Evening Seminar FRIDAY MARCH 19, 7:30–9:00PM

#### Adolescents in Treatment

Dr. Sheila Zaretsky will discuss and demonstrate how to work with adolescents in group and individual treatments especially focusing on depression, identity struggles, oppositionalism, violence, and maturity. Discussion and a social gathering follow. **No Charge · RSVP: 212.260.7050**

Sheila Zaretsky, PhD, faculty member, ACAP; consultant in schools and therapeutic programs in and around Newark; private practice in Northern New Jersey.

## Student Clinical Presentation Forum

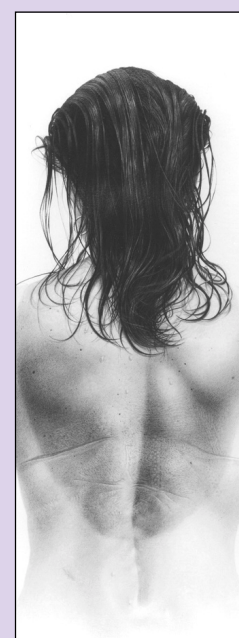
**FRIDAY, MARCH 26, 7:30–9:00 PM**

Ms. Faye Newsome moderates this clinical case presentation. The venue gives students in the Field Placement and Certificate Candidacy levels of training an opportunity to demonstrate their clinical learning processes, gain valuable presentation experience, stimulate group discussion, and engage in a dialogue with the moderator. Ms. Joyce Caraccioli, a student in the Certificate Program will present clinical material. Followed by discussion and a social gathering. **No Charge · RSVP: 212.260.7050**

Moderator: Faye Newsome, MA, LP, Faculty, CMPS, NYGSP and BGSP.

## CMPS ART SHOW April 12 – May 7

### Attachment: Drawings of My Family



Diver Detail, drawing, Dan Gilhooley

### Opening Reception & Gallery Talk FRIDAY APRIL 16th, 7:30PM

FOR THE PAST 25 YEARS DAN GILHOOLEY has made drawings and paintings exclusively about his family in the hopes of creating a lifelong subjective document of this portion of their lives. Working primarily as a draughtsman, he depicts his experience of family members, tracing the edges of their relationships, recollecting their past, and finding a shape for their hoped-for future. He occasionally supplemented his images with text, and often the stories about the making of the pictures are as meaningful as the drawings themselves.

Dan Gilhooley, PsyD, LP, Faculty, CMPS & NYGSP; 18 one-person shows and over 125 group exhibitions nationally; NAAP, Gradiva Award recipient; featured in Drawing magazine, 2005, describing the relationship of his work to psychotherapy; elected to the National Academy of Design, 1991.